

Corus Steel Packaging Recycling

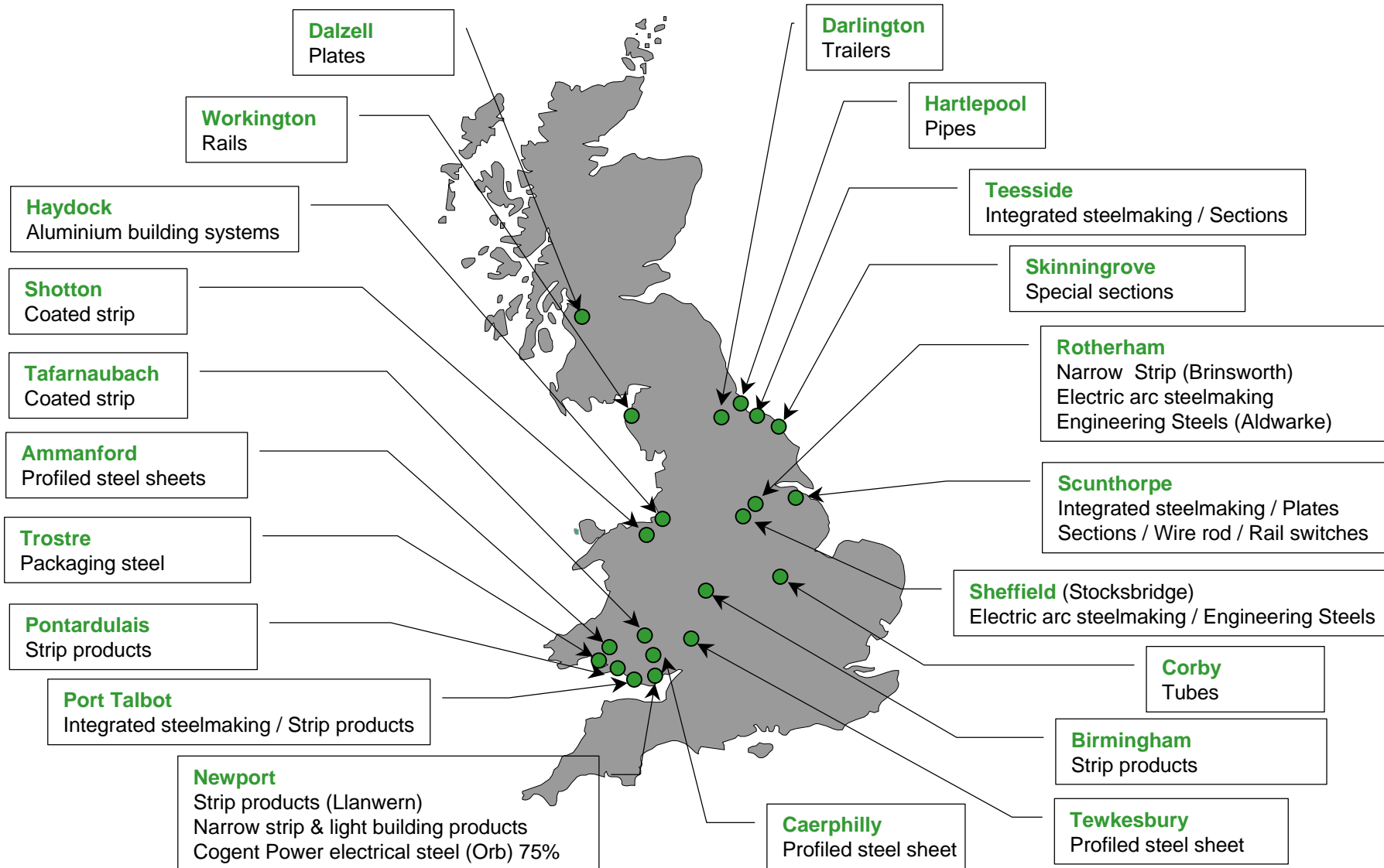
Garvin Freeman – Quality Conference

Wednesday 26th April 2006

About Corus

- Corus is an international metals company, providing steel and aluminium products and services to customers worldwide.
- Formed in 1999 when British Steel merged with Hoogovens of the Netherlands.
- Major manufacturing operations in the UK, the Netherlands, Germany, France, Norway and Belgium with sales offices and service centres all over the world.
- Corus is organised into four Divisions and employs over 47,000 people in over 40 countries.

Main manufacturing locations UK



Corus – the recycler

- Largest UK supplier of steel for packaging
- Largest UK domestic reprocessor of packaging steel
- 4 large scale UK Reprocessing Plants
 - Port Talbot
 - Scunthorpe
 - Teesside
 - Aldwarke

What do we recycle?

Corus uses ~ 4 million t.p.a. of scrap of various grades in the UK plants.

Packaging Steels:

- C & I steels, i.e. Drums, strapping
- Steel cans from from the household waste stream

The steel packaging market

Nearly 700kt of steel packaging placed in the UK market p.a.

- 200kt of C & I (mainly drums & strapping)
- 500kt of domestic steel packaging
 - 300kt of food, drink & petfood cans
 - 200kt of assorted domestic steel packaging

Types of domestic steel packaging you can recycle...



Petfood cans

Types of domestic steel packaging you can recycle...



Food cans

Types of domestic steel packaging you can recycle...



Drinks cans

Types of domestic steel packaging you can recycle...



Paint cans

Types of domestic steel packaging you can recycle...



Steel Aerosols

Types of domestic steel packaging you can recycle...



Closures (lids or caps on jars)

Types of domestic steel packaging you can recycle...



**Biscuit tins, chocolate tins, metal containers for spirits
(whisky bottles sometimes come in a metal gift box)**

Types of domestic steel packaging you can recycle...



**Square / oblong containers
for DIY or automotive products**

Types of domestic steel packaging you can recycle...



**Metal Cosmetic Containers
(some lipsticks are also sold
in a tin!)**

Types of domestic steel packaging you can recycle...

**Cone topped containers such
as Brasso**



Types of domestic steel packaging you can recycle...



**Lever-lid tins for
powders (milk
powder, creamer,
coffee, etc)**

Types of domestic steel packaging you can recycle...



**Cigar tins
(Café Crème, Hamlet etc)**

Sources of recycled packaging steel

- Kerbside & Bring schemes
- Material magnetically extracted from MBT plants
- Material magnetically extracted from incinerator bottom ash

Kerbside & Bring Schemes

We take in this material from the following sources:

- Source separated Kerbside
- Co-mingled Kerbside
- Can banks

Provides good quality material

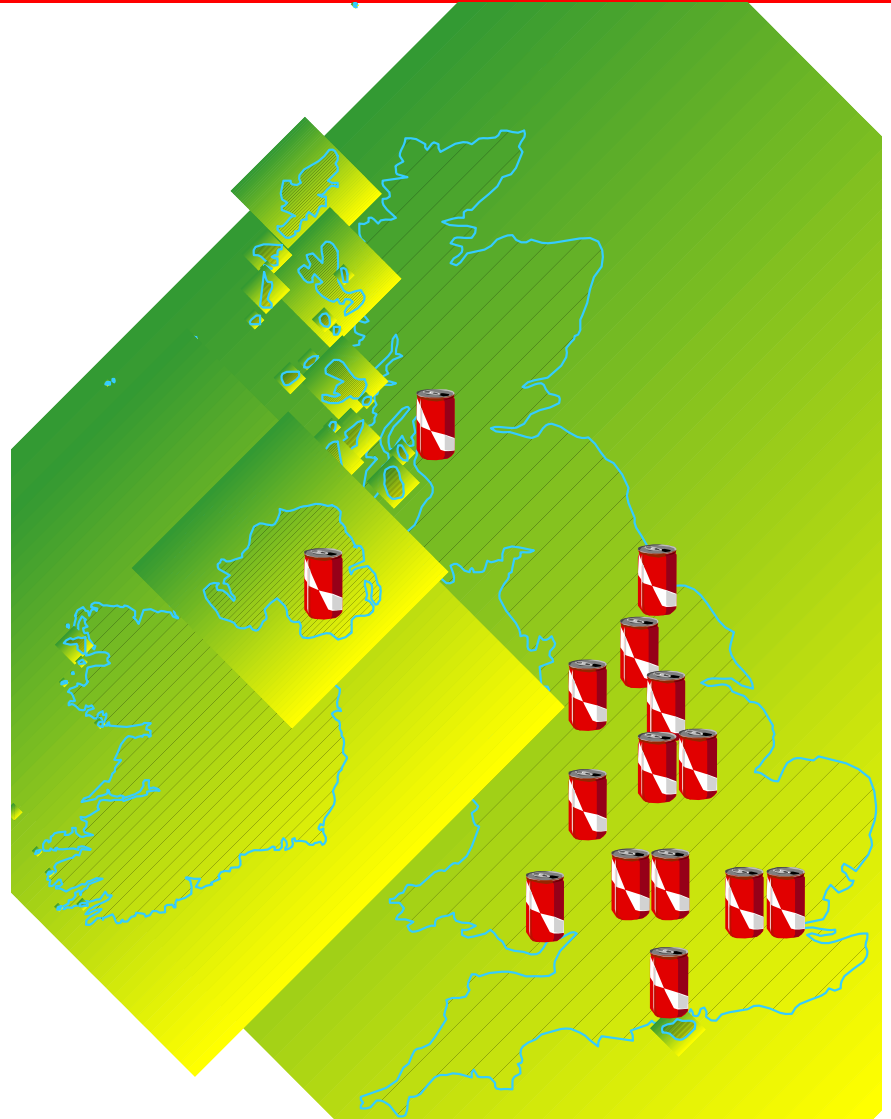


CanRoute

CanRoute accepts loose Steel
Cans and Baled Steel Cans



Baled to Steel plant specs of ~
1500kg/cu m



Mag-Ex from MSW

This means material magnetically extracted from MBT plants, DANO plants, and Autoclaves

Corus does not send this material for further “cleaning”.

Autoclave technology provides the cleanest ferrous material derived from MSW



Energy from Waste

- Ferrous material from Energy from Waste plants in the UK is not suitable for direct delivery to the steelplant, as it contains around 40% ash residue.
- Corus uses PRN funds to collect the steel, clean it using trommels, and bale it to a high density.
- Corus reprocesses the steel from 12 of the UKs EfW plants.



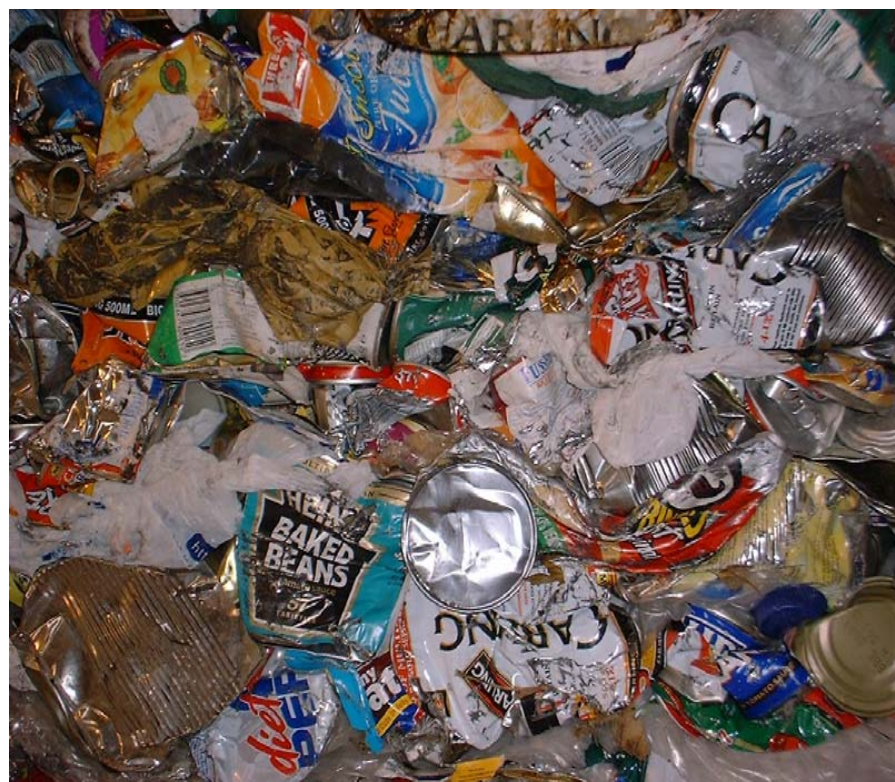
Steel Can Recycling Quality Issues

We want:

- Minimum 92% ferrous content
- Free of visual paper, plastic and organics

We do not want:

N.B. With greater volumes of recycled material becoming available quality issues will become increasingly important



Contact

If you require any further information please contact:

Garvin Freeman

Recycling Development Manager

(07734 985 652)

garvin.freeman@corusgroup.com

www.corusgroup.com

www.cspr.co.uk

www.scrib.org