



Corus Colors

Colorcoat Prisma®

Inspire your imagination

Aesthetics that last

Designed to withstand the rigours of the external environment, versatile, lightweight and strong, Colorcoat Prisma® pre-finished steel is the ideal choice for your building envelope for contemporary, long lasting colour.

Whatever your type of building from warehouses to offices, or schools to houses, Colorcoat Prisma® offers you a range of attributes that enables you to create beautiful, modern and durable roofs and walls, Confidex® guaranteed for up to 30 years.



Performance

Galvalloy®

Most pre-finished steel products use a zinc metallic coating that provides corrosion resistance but leaves cut edges vulnerable to peeling or premature paint delamination.

Colorcoat Prisma® uses the Corus unique and proven Galvalloy® metallic substrate, a special mix of 95% zinc and 5% aluminium, providing unrivalled corrosion protection, even at the cut edges.

Typical properties

Colorcoat Prisma®		Test standard	
Nominal organic coating thickness	(µm)*	50	EN 13523-1
Specular gloss (60°): Non-matt colours Matt colours	(%)	30-40	EN 13523-2
	(%)	3-5	EN 13523-2
Scratch resistance: Non-matt colours Matt colours	(g)	>3500	EN 13523-12
	(g)	>3000	EN 13523-12
Abrasion resistance: (Taber, 250 rev, 1kg) Non-matt colours Matt colours	(mg)	<20	EN 13523-16
	(mg)	<25	EN 13523-16
Flexibility: Minimum bend radius Reverse impact Adhesion (cross hatch) Pencil hardness	(T)	0.5T@16°C	EN 13523-7
	(J)	18	EN 13523-5
	(%)	100	EN 13523-6
		H	EN 13523-4
Corrosion resistance: Salt spray Humidity	(h)	1000	EN 13523-8
	(h)	1000	EN 13523-25
Corrosion resistance category		RC5 ¹	EN 10169
UV resistance category		Ruv4	EN 10169

* µm = micron

Notes

1. RC5 certification does not include matt colours, these are currently on test.
2. The figures contained in this table are typical properties and do not constitute a specification. Tested in accordance with EN 13523. For details on test methods visit www.colorcoat-online.com
3. For health and safety datasheets contact the Colorcoat Connection® helpline on +44 (0)1244 892434

Fire performance

Reaction to fire

Colorcoat Prisma® has a Class 1 surface spread of flame when tested in accordance with BS 476 part 7, and meets the Class 0 requirements of the Building Regulations for England and Wales 2000. Colorcoat Prisma® is classified in accordance with EN 13501 as Class A2-s1, d0.

Resistance to fire

Colorcoat Prisma® when used as part of a roof cladding system, will achieve a Class AA performance rating when tested in accordance with BS 476 part 3.

For products covered by EN 14782:2005

Colorcoat Prisma® is deemed to satisfy, without the need for further testing, the requirements for external fire performance of roof covering product in accordance with Commission Decision 2000/553/EC.

Colorcoat Prisma® meets the requirements for internal linings, and external surfaces of wall and roof coverings, for all building applications in the UK and Ireland.

Water harvesting

Colorcoat Prisma® has passed the stringent BS 6920:2000 test 'Suitability of non-metallic products for use in contact with water intended for human consumption with regard to the effect on the quality of water'. The testing has confirmed that when in contact with Colorcoat Prisma®, the cold water odour and flavour, appearance, cytotoxicity, growth of aquatic micro-organisms and metal extraction is not adversely affected and within the safe guidelines as dictated by the BS standard. Colorcoat Prisma® is registered as an approved material with the Water Regulatory Advisory Scheme (WRAS) for cold water use and so can be used as part of a rainwater collection system as it does not adversely affect the quality of the wholesome water supply.

Peace of mind guaranteed

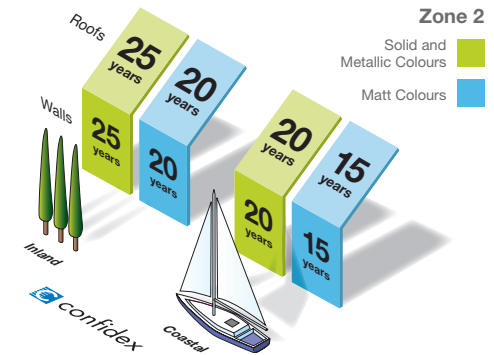
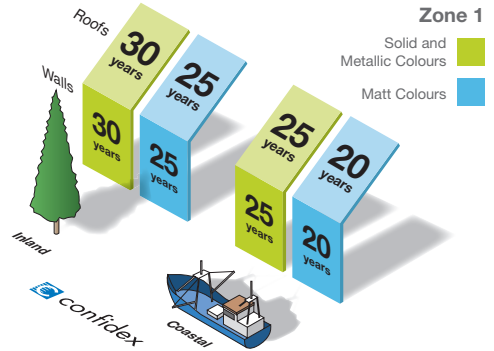
Confidex® Guarantee

The Confidex® Guarantee is available for all building envelopes using Colorcoat Prisma®. When you register for your Confidex® Guarantee, you will have peace of mind that the performance of Colorcoat Prisma® on your building is guaranteed for up to 30 years. We are so confident in our product that we cover the cut edges for the entirety of the guarantee. And with no mandatory inspections or maintenance, we remove the need to go on the roof to maintain the validity of the guarantee - Confidex® is the only pre-finished steel guarantee on the market that offers this.

The Confidex® Guarantee is direct with the building owner meaning that in the case of a claim the contact with Corus is direct rather than having to go through the supply chain, saving time and money. What's more this is transferable should the building owner change by simply filling in the form on the back of the guarantee certificate.

Who registers?

Usually the cladding contractor or the cladding system manufacturer, but anyone in the supply chain can apply. If you want to check if your building has been registered contact the Colorcoat Connection® helpline on +44 (0)1244 892434.



Notes

1. Figures under the Coastal heading are for buildings within 1 km of any coast.
2. Full terms and conditions of the Confidex® Guarantee are on the reverse of the application form, which is available from Corus.
3. Confidex® must be registered within 3 months of the building completion date for the guarantee to be valid.
4. The Confidex® Guarantee periods on the diagram above are applicable to Zone 1 and Zone 2. For more information on other zones visit www.colorcoat-online.com/confidexmap



Northern Europe – Zone 1
 Southern Europe – Zone 2
 For areas outside of Confidex® zones please contact Corus for more information.

British Board of Agrément Certificate

The long-term performance of Colorcoat Prisma® has been recognised within the BBA certificate 91/2717 and relates to the product use as external roofing and cladding or internal lining. 'Colorcoat Prisma® coating and metal treatment will protect the steel substrate against corrosion for a period in excess of 40 years in normal industrial, urban, and rural environments'.



Sustainability provided as standard

Life Cycle Assessment

The environmental impact of the pre-finished steel coating during manufacture is minimal compared with the overall construction process and the building's full lifetime. However, we constantly strive to ensure that the manufacturing processes, and materials used to manufacture Colorcoat Prisma® are the most sustainable available.

To demonstrate the environmental impacts, Corus have carried out comprehensive Life Cycle Assessments on a wide range of cladding systems using Colorcoat Prisma®. Please visit www.colorcoat-online.com/sustain for further details.

Energy efficiency

All Colorcoat Prisma® cladding systems achieve a BREEAM A+ rating. With good detailing they are thermally and energy efficient, a key requirement for keeping operating costs to a minimum.

Re-use and recycling

Colorcoat Prisma® is 100% recyclable without any additional burden to the environment in terms of emissions to the atmosphere. There is a well established and very efficient steel recycling infrastructure which ensures all the scrap collected at end of life goes back into steel manufacture.

The manufacture and processing of Colorcoat Prisma® into building envelope products, through our approved supply chain, meets the sustainable sourcing criteria for BREEAM. All our, and our supply chain partners manufacturing sites have an environmental management system which has been certified to ISO 14001.

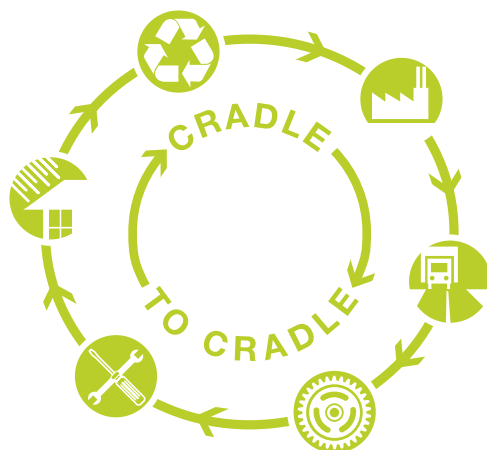
Made in the UK

Colorcoat Prisma® is exclusively from Corus, and as such is fully traceable. From steel manufacture to processing, Colorcoat Prisma® uses some of the most advanced, and sustainable, technologies in the UK for high quality building products with a lower carbon footprint.

Confidex Sustain®

Confidex Sustain® is an enhancement of the Confidex® Guarantee. As well as covering the performance of the Colorcoat Prisma® used on your building, it offsets the unavoidable CO₂ emitted during production of the whole cladding system, including the insulation and fixings.

For a list of assessed cladding systems, to pre-register your projects, or for more information on Confidex Sustain®, please visit www.colorcoat-online.com/sustain or call the Colorcoat Connection® helpline on +44 (0)1244 892434.



Colorcoat® services

The Colorcoat® brand is recognised as the exclusive mark of quality and metal envelope expertise and is supported by a comprehensive range of services, technical advice and guidance.

Colorcoat® Business Development Team

The team are readily available to advise you on the design, specification and construction of your metal building envelope.

Call the Colorcoat Connection® helpline or visit www.colorcoat-online.com to find out who the representative is for your area.

Colorcoat Connection® helpline

This dedicated helpline offers immediate and easily accessible advice and guidance on a wide range of construction issues.

Contact us on +44 (0)1244 892434.

Colorcoat® Technical Papers

We have produced a number of technical papers that can help you address key issues in building design and construction.

Colorcoat® Specification Wizard

NBS specifications can be quickly produced using the Colorcoat® Specification Wizard.

Colour, cladding system and Confidex Sustain® can all be specified in just a few clicks.

Colorcoat® Supply Chain Partners

Colorcoat® products are available through our market-leading supply chain partners, whose CE marked and SCI assessed systems we recommend for the very highest quality and service.

Corus Accredited Distributors

Our Corus Accredited Distributors can provide you with any colour from the Colorcoat Prisma® range in small quantities, with a 48 hour service guaranteed.

BS & RAL reference table

Colour	BS	RAL
Athena		*
Pegasus		*
Aquarius		*
Atlantis		*
Kronos		*
Sirius		*
Orion		*
Zeus		*
Ephyra		*
Helios		*
Silver Metallic		9006
Grey Aluminium		9007
Denim		5014
Clover		6005
Hamlet		9002
Cream		1015
Oxide Red		3009
Chocolate Brown	04D44	8017
Black	00E53	9005
White	00E55	9010
Oyster		7035
Alaska Grey		7000
Slate Grey		7012
Anthracite		7016
Terracotta Matt	04C39	040 40 40
Copprum Matt		160 70 20
Anthracite Matt		7016

RAL references

4 digit numbers are RAL Classic references.

7 digit numbers are RAL Design references.

British Standard or RAL reference numbers shown in the table, represent the nearest colours and are not exact matches to Colorcoat Prisma®.

* These colours do not have equivalent BS/RAL references.

For further details visit:

www.colorcoat-online.com or ring the **Colorcoat Connection® helpline** on **+44 (0)1244 892434**

Colorcoat Prisma®

Introduction

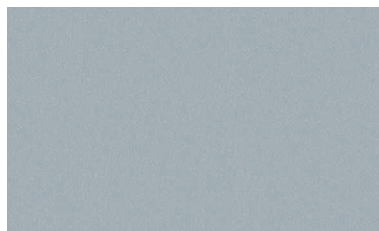
Now Confidex® guaranteed for up to 30 years Colorcoat Prisma® is backed by even more testing and real world data to combine outstanding aesthetics with long lasting performance.

Following consultations with architects and our supply chain, we have developed a new contemporary colour palette for Colorcoat Prisma® which includes solids, metallics and new natural matt shades.

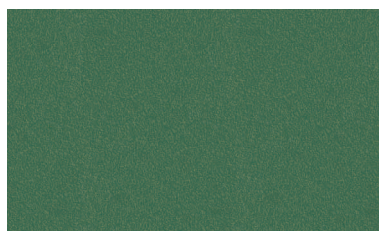
Product benefits

- **Contemporary new colour range with an optically smooth finish for modern designs.**
- **All solid and metallic colours surpass requirements of RuV4 and RC5 as per EN 10169 proving outstanding colour retention and corrosion resistance.**
- **Optimised Galvalloy® metallic substrate for ultimate corrosion resistance and cut edge protection.**
- **Confidex® Guarantee for up to 30 years with no maintenance or inspections required to maintain its validity.**
- **Available with Confidex Sustain® to offer the world's first CarbonNeutral building envelope.**
- **Reverse side branding making traceability easy, so you can rest assured that your building is protected with the highest quality from Corus.**
- **Standard sizes are available on short production lead times.**

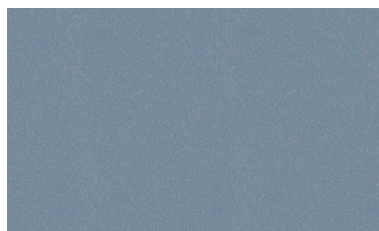
Special metallics



Athena



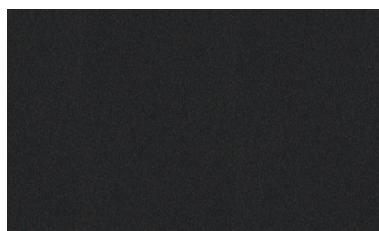
Pegasus



Aquarius

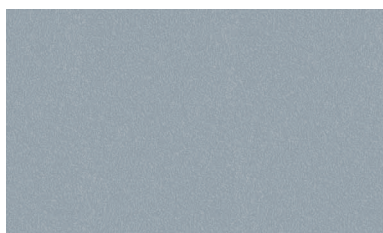


Atlantis

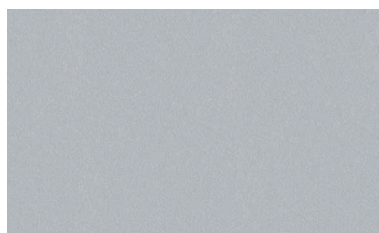


Kronos

Solid metallics



Sirius



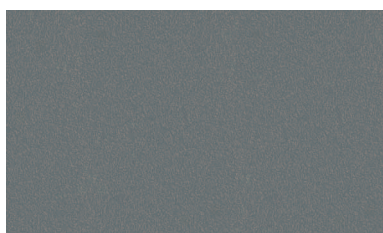
Silver Metallic (RAL 9006)



Orion

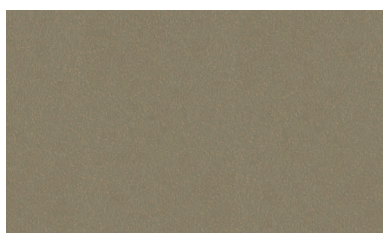


Grey Aluminium (RAL 9007)



Zeus

Solid colours



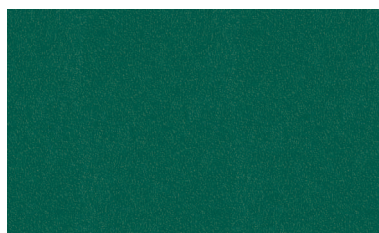
Ephyra



Denim (RAL 5014)



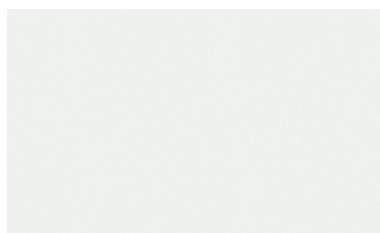
Helios



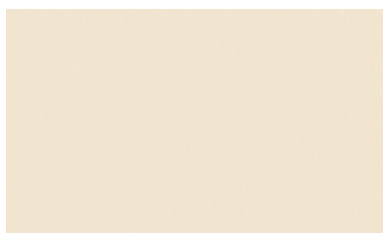
Clover (RAL 6005)



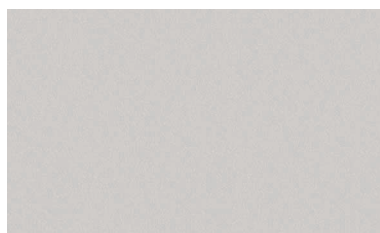
Hamlet (RAL 9002)



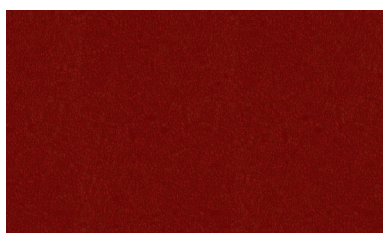
White (RAL 9010)



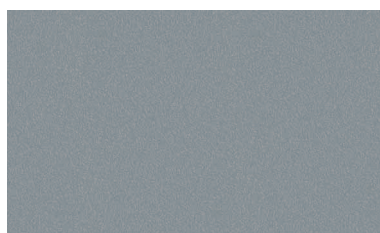
Cream (RAL 1015)



Oyster (RAL 7035)



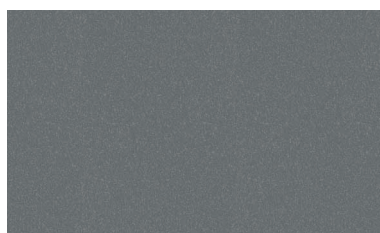
Oxide Red (RAL 3009)



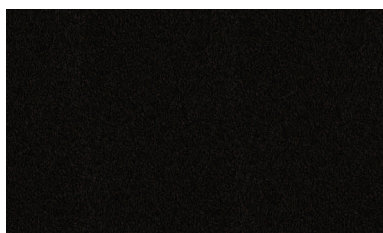
Alaska Grey (RAL 7000)



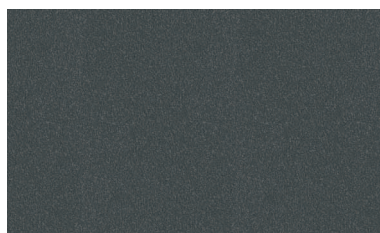
Chocolate Brown (RAL 8017)



Slate Grey (RAL 7012)

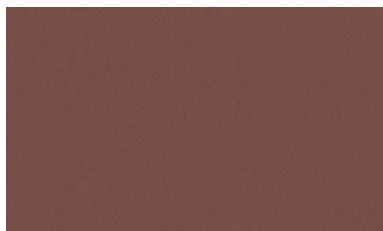


Black (RAL 9005)

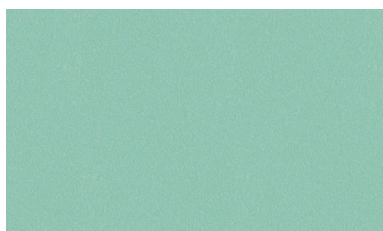


Anthracite (RAL 7016)

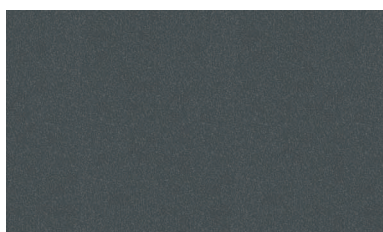
Matt colours



Terracotta (RAL 040 40 40)



Copprium (RAL 160 70 20)



Anthracite (RAL 7016)

Additional features

- Colorcoat Prisma® can be used as a pre-finished steel substrate for photovoltaic (PV) systems. It has been tested by TUV in conjunction with a PV laminate, and meets the requirements of IEC 61646.
- Colorcoat Prisma® is provided with a high performance backing coat as standard, but is also available double sided in limited colours for buildings with demanding internal environments or for applications such as rainscreens and rainwater goods. For availability of colour combinations please contact the Colorcoat Connection® helpline.
- A selection of Colorcoat Prisma® colours have been developed to provide improved solar absorption so are ideal for perforated Transpired Solar Collectors. The solar absorption efficiency is colour dependent, please contact the Colorcoat Connection® helpline for further details.

Specification

To secure the peace of mind that comes from a rigorously manufactured and world wide tested product from Corus, please ensure Colorcoat® as well as the individual product name is specified: Corus Colorcoat Prisma® with Galvalloy® hot-dip metallic coated steel.

For further details visit:

www.colorcoat-online.com or ring the Colorcoat Connection® helpline on **+44 (0)1244 892434**

Colour reassurance

Colour availability

All the colours on the colour card are now available on short production lead times, and from our Corus Accredited Distributors in standard sizes.

To check the quickest colour availability for your project contact the Colorcoat Connection® helpline on +44 (0)1244 892434.

Repertoire®

As an additional service, whether you want your building to stand out, or blend with the surroundings, we can create a unique identity for your building. Through our Repertoire® Colour Consultancy service we can match almost any solid colour for walls or roofs for your building, with a minimum order quantity of 2000 m², we can work from either physical swatches or reference standards.

Metal hand samples

Metal hand samples are available for all colours. For a truer representation of colour and effect, please obtain metal hand samples from the Colorcoat Connection® helpline or online at www.colorcoat-online.com/samples

Colour consistency

If tonal consistency is critical, all cladding for a single elevation should come from the same production batch. All metallic shades exhibit a degree of directionality.

Matching components

If accessories made from other materials are to be colour-matched to the roof or wall cladding, the best reference is the actual profiles or panels delivered to site, or material from the same batch.

www.colorcoat-online.com

Trademarks of Corus

Aquarius, Atlantis, Colorcoat, Colorcoat Connection, Confidex, Confidex Sustain, Copprium, Galvalloy, Hamlet, Helios, Kronos, Orion, Pegasus, Prisma, Repertoire, Sirius and Zeus are trademarks of Corus.

Corus is part of the Tata Steel group.

Care has been taken to ensure that the contents of this publication are accurate, but Tata Steel Europe Limited and its subsidiaries do not accept responsibility or liability for errors or information that is found to be misleading. Suggestions for, or descriptions of, the end use or application of products or methods of working are for information only and Tata Steel Europe Limited and its subsidiaries accept no liability in respect thereof.

Before using products or services supplied or manufactured by Tata Steel Europe Limited and its subsidiaries, customers should satisfy themselves as to their suitability.

Printed on material which is manufactured from ECF (Elemental Chlorine Free) pulp sourced from certified or well managed forests and plantations. Inks used are vegetable based.

Copyright 2010 Corus
Language English UK 0410

Sales Contact Details

Corus Colors
Shotton Works
Deeside
Flintshire
CH5 2NH
United Kingdom

T: +44 (0)1244 812345

Colorcoat Connection® helpline

T: +44 (0)1244 892434

F: +44 (0)1244 892321

E: colorcoat.connection@corusgroup.com